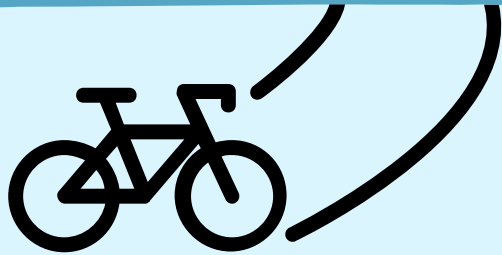


# ARKLOW SOUTH CYCLE & PEDESTRIAN IMPROVEMENTS

## What is proposed?

This scheme will provide an improved level of service for pedestrians and cyclists but will also provide much needed traffic calming on the approach to Arklow Town.

- Upgrade the pedestrian and cycle facilities along the R-772 between M11 Junction 21 and the existing cycle and pedestrian facilities at the Knockmore Roundabout on the outskirts of Arklow Town.
- Construction of approximately 3.2km of cycle track (1.6km inbound, 1.6km outbound) and approximately 1.2km of pedestrian footpath.
- The proposed cycle tracks will be raised above the road level and will be separated from the carriageways using a precast kerb.



## Active Travel in Wicklow

Aims to:

- Promote awareness and uptake of travelling with a purpose, using your own energy by means of walking or cycling.
- Improve transport options for those choosing alternatives to the car.

Contact: [ActiveTravel@wicklowcoco.ie](mailto:ActiveTravel@wicklowcoco.ie)



## Why are these works required?

- The scheme will provide an improved level of service for pedestrians and cyclists but will also provide much needed traffic calming on the approach to Arklow town.
- The scheme will provide improved and safer linkages for pedestrians and cyclists to the Kish Business Park, IDA Business Park located at Ballynattin, Servier pharmaceutical facility and will also provide safer walking conditions for recreational walkers on this immensely popular route.
- The scheme will encourage a modal shift away from motorised forms of transport and will promote and encourage healthy living, wellness and wellness through walking and cycling.

## Where is the scheme?

Along the R-772 between M11 Junction 21 and the existing cycle and pedestrian facilities at the Knockmore Roundabout on the outskirts of Arklow town.



Figure 1 - Existing Footpath along the R772

## Proposed location of works

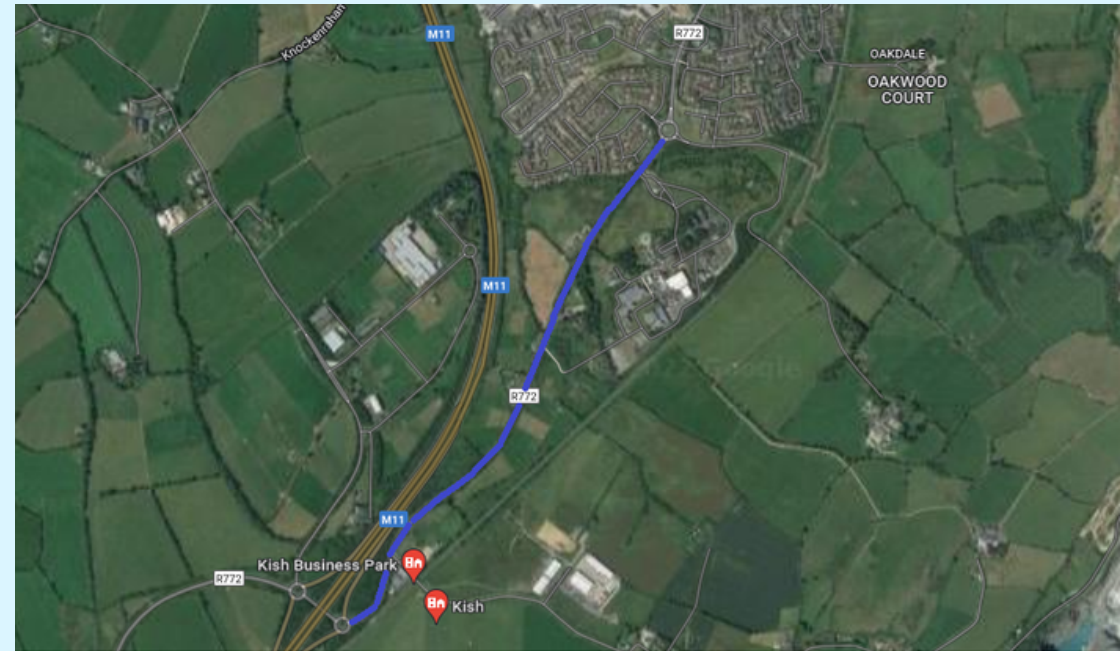


Figure 2 - Project Location Map



Figure 3 - Junction with L-2188